

FAST FACTS ABOUT ECHOMIND*

AI-BASED TRAINING FOR INVESTIGATIVE INTERVIEWING

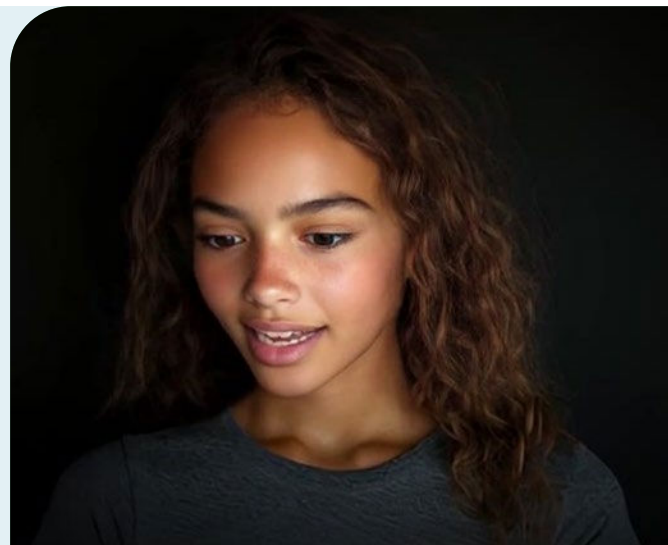
Developed by OSACO, ECHOMIND is an AI-powered avatar training solution that provides repeatable training and delivers feedback-driven performance enhancement.

ECHOMIND leverages AI-powered avatars as interview subjects, allowing ECHOMIND to effectively simulate realistic law enforcement investigative interview scenarios.

Avatars emulate cultural and emotional nuances, making training sessions as realistic as possible.

The platform delivers feedback in real-time; post-interview; and via visual emotional reactions, which together enhance the quality and consistency of the training.

Academic research at New York University has shown that the platform delivers consistently more effective interviews (75 - 80%) than traditional face-to-face interview training scenarios.



THE PROBLEM.

Current training practices are outdated and produce minimal learning retention. They are not scalable, portable, or progressive in complexity.

Good interviewing requires rapport-building and use of open-ended questions; both skills require ongoing quality practice, and participant-specific feedback for maximum retention.

However, traditional investigative interview training relies on classroom-based lessons and scripted role-play. This style of training only produces about a 30% improvement rate.

It fails to:

- » allow adequate time for practice
- » provide specific feedback
- » advance learning in a guided way.

The result: Inconsistent, ineffective interviewing leading to wrongful convictions, re-traumatized victims, and low case clearance rates.

ECHOMIND IS THE COMPLETE SOLUTION.

OSACO has created a cutting-edge educational tool that leverages AI technology and academic research to revolutionize interview training.

Instead of classroom roleplays, ECHOMIND enables interview trainees to log into their laptops and interact directly with our avatars, who are trained to respond as the interviewee.

The avatar and scenarios become more complex as the interviewer builds their skills.

ECHOMIND supports:

- » development of open-ended questioning through practice
- » growth of rapport-building skills
- » participant-specific feedback
- » assistance and guidance, as interviewers are monitored via a dashboard system.

The result: Improved quality and effectiveness of training, and continuous learning in a fully accessible environment.

Effective investigative interviewing is at the heart of any investigation and is essential to achieving justice in society.

CORE FEATURES



Avatars

Realistically animated AI personas, with cultural and emotional nuances, capable of simulating diverse interview scenarios.



Real-Time Feedback

Instant visual cues and detailed post-session feedback support users to continuously adapt and improve their techniques.



Scenario-Based Training

Different interview scenarios for witness, victim or suspect, and avatars representing different people (ages, genders, cultures).



Supports Practice and Progression

Creates a variety of challenging, realistic interview settings to enhance and extend interviewer skills.



Cloud-Based Access

Fully accessible and secure via a browser, eliminating the need for complex setups and making training available anytime, anywhere.



Large Language Model (LLM)

Leverages next-generation AI that is capable of emotional nuance and multilingual responses.

SCALABLE AND FLEXIBLE

- » The initial law enforcement interviewing scenario is witness to a theft, with the potential to add additional scenarios, as well as complainant, victim, and suspect avatars.
- » Cost-effective training and development that can be repeatedly accessed, with subscription costs managed upfront.
- » Designed to meet the evolving needs of law enforcement across various disciplines and environments.

ACCESSIBLE AND SECURE

- » ECHOMIND is cloud-based and hosted on OSACO secure servers, making it safely accessible anywhere.
- » It allows trainees to practice in diverse scenarios without traditional logistical barriers of time, location, or cost.

ABOUT OSACO GROUP LTD

OSACO is a global network of expert consultants specializing in law enforcement, investigative interviewing and professional training to enhance investigative skills.



KEY CONTACTS

For global partnerships, enterprise agreements, and international inquiries, contact:

Sean Buckley
Global Director of Operations
OSACO Group Ltd
seanbuckley@osacogroup.com

For partnerships, onboarding, and support in North America, contact:

Zahida Virani
Head of North America
OSACO Group Ltd
zahidavirani@osacogroup.com

Let's shape the future of investigative training, together.

www.osacogroup.com

